

# BUS BLOWER MOTORS AND FANS

## SCHOOL, SHUTTLE and TRANSIT

**3151**



Voltage .....	12	Rotation .....	CCW
Shaft Lgth ....	1.25	Shaft Dia .....	5/16"
Motor Dia .....	2.5	Overall Lgth ...	4.75
Motor Lgth ....	4.25	Stud Span .....	n/a
Speed .....	1	Vent.....	Sealed
Mount .....	Strap	Wires .....	2

MFG'S	O.E.M.
A/C Ind / Carrier .....	501-102A

**3354**

Incl. shaft adapter



Voltage .....	12	Rotation .....	REV
Shaft Lgth .....	1.5	Shaft Dia. 1/4" / 5/16"	
Motor Dia .....	3	Overall Lgth ...	3.75
Motor Lgth ....	2.88	Stud Span .....	2.31
Speed .....	1	Vent.....	No
Mount Stud (frt, rr)		Wires .....	2

MFG'S	O.E.M.
Bergstrom .....	202270
Bluebird .....	2162519
DCM .....	D001-665
Fasco .....	2807-406-007
	2807-406-011
Other .....	1122-01

**3457**

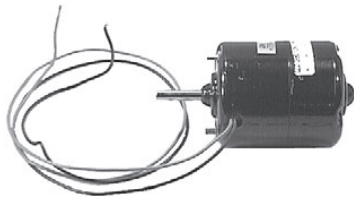
Double Shaft



Voltage .....	12	Rotation .....	CCW
Shaft Lgth ....	1.50	Shaft Dia .....	5/16"
Motor Dia ....	3.00	Overall Lgth ...	4.63
Motor Lgth ....	4.00	Stud Span .....	2.31
Speed .....	1	Vent.....	Yes
Mount Stud (frt, rr)		Wires .....	2

MFG'S	O.E.M.
Bergstrom .....	1099061
Bluebird .....	8307373
DCM .....	D001-955
Fasco .....	2809-541-148
TA Bus .....	HM1109

**3458**



Voltage .....	12	Rotation .....	CW
Shaft Lgth ....	1.40	Shaft Dia .....	5/16"
Motor Dia ....	3.00	Overall Lgth ...	4.20
Motor Lgth ....	3.60	Stud Span .....	2.31
Speed .....	2	Vent.....	Yes
Mount Stud (front)		Wires .....	2

MFG'S	O.E.M.
Bergstrom .....	1099033
	1099054
Bluebird .....	0228072
DCM .....	D001-428
Fasco .....	2807-513-101
	2507-513-163
Thomas .....	6500-0439
Other .....	201320

**3464**



Voltage .....	12	Rotation .....	CW
Shaft Lgth ....	0.56	Shaft Dia .....	1/4"
Motor Dia ....	3.00	Overall Lgth ...	3.69
Motor Lgth ....	2.81	Stud Span .....	2.31
Speed .....	2	Vent.....	Yes
Mount Stud (front)		Wires .....	2

MFG'S	O.E.M.
Bluebird .....	0935494
DCM .....	D001-674
Fasco .....	2807-406-060

**3466**



Voltage .....	12	Rotation .....	CW
Shaft Lgth ....	1.63	Shaft Dia .....	5/16"
Motor Dia ....	3.00	Overall Lgth ...	3.75
Motor Lgth ....	3.00	Stud Span .....	2.31
Speed .....	2	Vent.....	Yes
Mount . Stud(fr/rr)		Wires .....	3

MFG'S	O.E.M.
Bergstrom .....	1099078
DCM .....	D001-491
TA Bus .....	HM9998

**AirSource**<sup>®</sup>  
Heavy Duty A/C Components

## SCHOOL, SHUTTLE and TRANSIT (continued)

**3467**



Voltage .....	12	Rotation .....	CCW
Shaft Lgth ....	1.63	Shaft Dia .....	5/16"
Motor Dia .....	3.00	Overall Lgth ...	3.75
Motor Lgth ....	3.00	Stud Span .....	2.31
Speed .....	2	Vent.....	Yes
Mount Stud (frt,rr)		Wires .....	3

MFG'S	O.E.M.
DCM .....	D001-492
Other .....	1522-01

**3468**



Internally Grounded			
Voltage .....	12	Rotation .....	CW
Shaft Lgth ....	1.06	Shaft Dia .....	1/4"
Motor Dia .....	3.00	Overall Lgth ...	3.50
Motor Lgth ....	2.625	Stud Span .....	2.31
Speed .....	2	Vent.....	Yes
Mount Stud (rear)		Wires .....	2

MFG'S	O.E.M.
Bergstrom .....	202270
DCM .....	D001-483
Fasco .....	2807-406-108
TA Bus .....	HM50
Thomas .....	8566-0130
Other .....	GR037

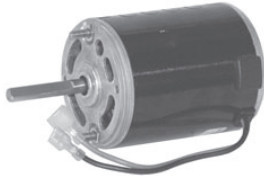
**3469**



Internally Grounded			
Voltage .....	12	Rotation .....	CW
Shaft Lgth ....	0.70	Shaft Dia .....	5/16"
Motor Dia .....	3.00	Overall Lgth ...	4.00
Motor Lgth ....	3.10	Stud Span .....	2.31
Speed .....	2	Vent.....	Yes
Mount Stud (rear)		Wires .....	2

MFG'S	O.E.M.
Bluebird .....	210033
Fasco .....	2807-508-067
TA Bus .....	HM72C
Other .....	1512-03

**3470**



Voltage .....	12	Rotation .....	CW
Shaft Lgth ....	1.81	Shaft Dia .....	5/16"
Motor Dia .....	3.00	Overall Lgth ...	4.00
Motor Lgth ....	3.75	Stud Span .....	2.31
Speed .....	1	Vent.....	Yes
Mount Stud (front)		Wires .....	2

MFG'S	O.E.M.
Bergstrom .....	1099050
	203067
Redmond .....	PF24172Q
Thomas .....	8566-0227

**3471**



Voltage .....	12	Rotation .....	CW
Shaft Lgth ....	1.00	Shaft Dia .....	5/16"
Motor Dia .....	3.00	Overall Lgth ...	4.25
Motor Lgth ....	3.50	Stud Span .....	2.31
Speed .....	2	Vent.....	Yes
Mount Stud (rear)		Wires .....	3

MFG'S	O.E.M.
Bergstrom .....	1099051
Bluebird .....	20100200
DCM .....	D001-589
Fasco .....	2807-513-117
	2807-513-152
IHC Bus .....	2503279C1
Thomas .....	2606-5366
	8566-0378
Other .....	1512-02

**3475**



Voltage .....	12	Rotation .....	CCW
Shaft Lgth ....	1.06	Shaft Dia .....	1/4"
Motor Dia .....	3.00	Overall Lgth ...	3.50
Motor Lgth ....	2.625	Stud Span .....	2.31
Speed .....	2	Vent.....	No
Mount .....	Clamp	Wires .....	3

MFG'S	O.E.M.
Bergstrom .....	1099059
	1099062
	203411
Bluebird .....	1438480
DCM .....	D001-521
Fasco .....	2807-406-079
	2807-406-110
TA Bus .....	HM60, HM1105
Thomas .....	8566-0101
Other .....	GR055

## SCHOOL, SHUTTLE and TRANSIT (continued)

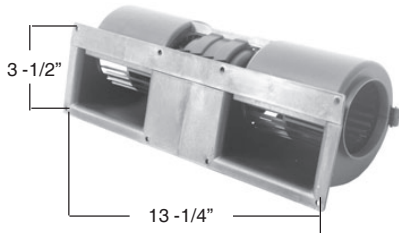
**3931**



Voltage .....	12	Rotation .....	REV
Shaft Lgth ....	1.63	Shaft Dia .....	5/16"
Motor Dia .....	3.00	Overall Lgth ...	3.75
Motor Lgth ....	3.00	Stud Span .....	2.31
Speed .....	2	Vent .....	Yes
Mount Stud (frt,rr)		Wires .....	5

MFG'S	O.E.M.
Bergstrom .....	1099057
Bluebird .....	0159723
	2130656
DCM .....	D001-017
	D001-490
Fasco .....	2807-508-034
	2807-508-035
TA Bus .....	HM100, HM8002
Thomas .....	9000-0105
Other .....	1112-01, 1532-02

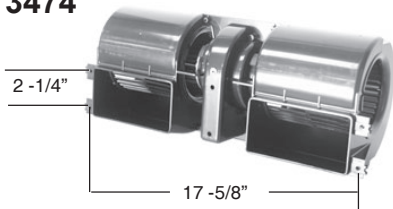
**3473**



IHC/Thomas-Bergstrom Motor Assembly			
Voltage .....	12	Rotation .....	-
Length .....	13-1/4"	Shaft Dia .....	5/16"
Height .....	3 -1/2"	Stud Span .....	n/a
Speed .....	3	Vent .....	Yes
Wires .....	4	Motor .....	n/a
Mount .....	Assm		

MFG'S	O.E.M.
Bergstrom .....	530277
	1099077
Bluebird .....	8303182
Fasco .....	2898-072-016
Other .....	H5302

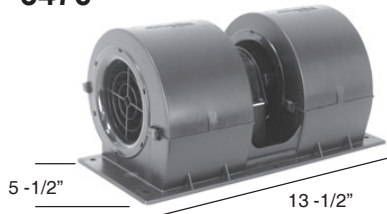
**3474**



Carrier Bus Motor Assembly			
Voltage .....	12	Rotation .....	-
Length .....	17-5/8"	Shaft Dia .....	5/16"
Height .....	2 -1/4"	Stud Span .....	n/a
Speed .....	1	Vent .....	Yes
Wires .....	2	Motor .....	n/a
Mount .....	Assm		

MFG'S	O.E.M.
Transair .....	412032

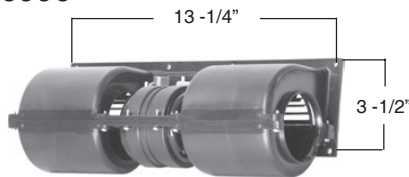
**3476**



Bergstrom Bus Motor Assembly			
Voltage .....	12	Rotation .....	CCW
Length .....	13-1/2"	Shaft Dia .....	5/16"
Height .....	5 -1/2"	Stud Span .....	n/a
Speed .....	1	Vent .....	Yes
Wires .....	2	Motor .....	01-2038
Mount .....	Assm		

MFG'S	O.E.M.
Bergstrom .....	B411407
	1075018

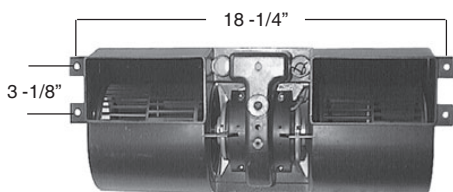
**3993**



Voltage .....	12		
Length .....	13-1/4"		
Height .....	3-1/2"		
Speed .....	3		
Wires .....	4		
	12v motor 01-3001		
	(2) 18-2615 wheels		

MFG'S	O.E.M.
A/C Ind / Carrier .....	401-203
TA Bus .....	BLW204
Transair .....	412019

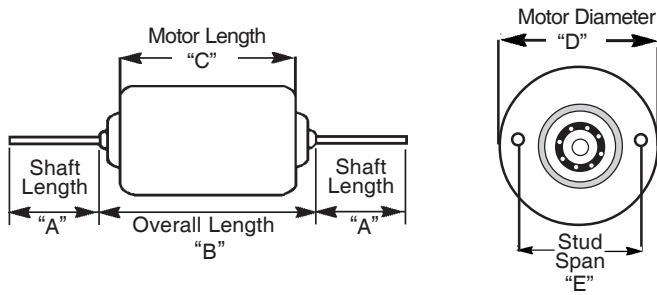
**3990**



Voltage .....	12	Rotation .....	-
Length .....	18-1/4"	Shaft Dia .....	5/16"
Height .....	3 -1/8"	Stud Span .....	n/a
Speed .....	1	Vent .....	Yes
Wires .....	2		
Mount .....	Assm	Motor .....	n/a

MFG'S	O.E.M.
A/C Ind / Carrier .....	401-209A
	401-232
	501-108
Bergstrom .....	650347
	2399017
TA Bus .....	BLW200
Transair .....	412025
Other .....	MB001

## SCHOOL, SHUTTLE and TRANSIT (continued)



ROTATION DETERMINED BY VIEWING MOTOR FROM SHAFT END.

CW = Clockwise  
 CCW = Counter Clockwise  
 REV = Reversible  
 HD = Heavy Duty

### SPECIFICATIONS

Shaft Dia.	Volts	Rotation	Shaft Length "A"	Overall Length "B"	Motor Length "C"	Motor Diameter "D"	Stud Span "E"	Spd	Wires	Vent	Part No.	Description
<b>Single Shaft</b>												
1/4" / 5/16"	12	REV	1.5	3.75	2.88	3.00	2.31	1	2	Sealed	<b>3354</b>	Includes shaft adapter
1/4"	12	CW	0.56	3.69	2.81	3.00	2.31	1	2	Vented	<b>3464</b>	
1/4"	12	CW	1.06	3.50	2.62	3.00	2.31	2	2	Vented	<b>3468</b>	Internally grounded
1/4"	12	CCW	1.06	3.50	2.62	3.00	2.31	2	3	Sealed	<b>3475</b>	
5/16"	12	CW	1.40	4.20	3.60	3.00	2.31	2	2	Vented	<b>3458</b>	
5/16"	12	REV	1.63	3.75	3.00	3.00	2.31	2	5	Vented	<b>3931</b>	
5/16"	12	CCW	1.25	4.75	4.25	2.50	-	1	2	Sealed	<b>3151</b>	Strap mount
5/16"	12	CW	1.63	3.75	3.00	3.00	2.31	2	3	Vented	<b>3466</b>	
5/16"	12	CCW	1.63	3.75	3.00	3.00	2.31	2	3	Vented	<b>3467</b>	
5/16"	12	CW	0.70	4.00	3.10	3.00	2.31	2	2	Vented	<b>3469</b>	Internally grounded
5/16"	12	CW	1.81	4.00	3.75	3.00	2.31	1	2	Vented	<b>3470</b>	
5/16"	12	CW	1.00	4.25	3.50	3.00	2.31	2	3	Vented	<b>3471</b>	
<b>Double Shaft</b>												
5/16"	12	CCW	1.50	4.63	4.00	3.00	2.31	1	2	Vented	<b>3457</b>	Double shaft

### PUSHER FANS

**3963**



AC Ind/Carrier Bus Motor Assembly  
 Standard Type (5 blade)  
 Voltage ..... 12  
 Blade Dia. .... 11"  
 Overall Dia. ... 12"  
 Width ..... 3-3/4"  
 Mntng Hole Dist: 11-1/2" upper to lower  
 Mntng Hole Dist: 6-1/2" upper L to upper R

MFG'S O.E.M.  
 A/C Ind / Carrier ..... 401-110  
 Transair ..... 11S3002  
 Other ..... MTR140

**3963V**



AC Ind/Carrier Bus Motor Assembly  
 Vector Type (10 blade)  
 Replaces Standard Type  
 Voltage ..... 12  
 Blade Dia. .... 11"

MFG'S O.E.M.  
 A/C Ind / Carrier ..... 401-110

### DASH FANS



**3855**  
 Guard Dia. .. 7-1/2" Blade Dia. ... 6-1/2"  
 Height ..... 9-1/2" Width ..... 5-3/8"  
 Guard ..... Metal CFM ..... 230  
 Base ..... Square Color ..... Black  
 Volt ..... 12v Speed ..... -



**3862**  
 Guard Dia. .... 8" Blade Dia. ... 6-1/2"  
 Height ..... 8-3/4" Width ..... 5-3/8"  
 Guard ..... Metal CFM ..... -  
 Base ..... Round Color ..... Chrome  
 Volt ..... 12v Speed ..... 2

## INTERCHANGE

O.E.M.#	Part#
<b>AC IND/CARRIER</b>	
401-110 .....	3963
401-110 .....	3963V
401-203 .....	3993
401-209A .....	3990
401-232 .....	3990
501-102A .....	3151
501-108 .....	3990
<b>BERGSTROM</b>	
1075018 .....	3476
1099033 .....	3458
1099050 .....	3470
1099051 .....	3471
1099054 .....	3458
1099057 .....	3931
1099059 .....	3475
1099061 .....	3457
1099062 .....	3475
1099077 .....	3473
1099078 .....	3466
202270 .....	3468
203067 .....	3470
203088 .....	3471
203411 .....	3475
2399017 .....	3990
411407 .....	3476
530277 .....	3473
650347 .....	3990

O.E.M.#	Part#
<b>BLUEBIRD</b>	
0159723 .....	3931
0228072 .....	3458
0935494 .....	3464
1438480 .....	3475
20100200 .....	3471
210033 .....	3469
2130656 .....	3931
2162519 .....	3354
8303182 .....	3473
8307373 .....	3457
<b>DCM</b>	
D001-017 .....	3931
D001-428 .....	3458
D001-483 .....	3468
D001-490 .....	3931
D001-491 .....	3466
D001-492 .....	3467
D001-521 .....	3475
D001-589 .....	3471
D001-665 .....	3354
D001-674 .....	3464
D001-955 .....	3457
<b>FASCO</b>	
2507-513-163 .....	3458
2807-406-007 .....	3354
2807-406-011 .....	3354

O.E.M.#	Part#
2807-406-060 .....	3464
2807-406-079 .....	3475
2807-406-108 .....	3468
2807-406-110 .....	3475
2807-508-034 .....	3931
2807-508-035 .....	3931
2807-508-067 .....	3469
2807-513-101 .....	3458
2807-513-117 .....	3471
2807-513-152 .....	3471
2809-541-148 .....	3457
2898-072-016 .....	3473
<b>IHC BUS</b>	
2503279C1 .....	3471
<b>REDMOND</b>	
PF24172Q .....	3470
<b>TA BUS</b>	
BLW200 .....	3990
BLW204 .....	3993
HM100 .....	3931
HM1105 .....	3475
HM1109 .....	3457
HM50 .....	3468
HM60 .....	3475
HM72C .....	3469
HM8002 .....	3931
HM9998 .....	3466

O.E.M.#	Part#
<b>THOMAS</b>	
2606-5366 .....	3471
6500-0439 .....	3458
8566-0101 .....	3475
8566-0130 .....	3468
8566-0227 .....	3470
8566-0378 .....	3471
9000-0105 .....	3931
<b>TRANSAIR</b>	
11S3002 .....	3963
412019 .....	3993
412025 .....	3990
412032 .....	3474
<b>OTHER</b>	
1112-01 .....	3931
1122-01 .....	3354
1512-01 .....	3466
1512-02 .....	3471
1512-03 .....	3469
1522-01 .....	3467
1532-02 .....	3931
201320 .....	3458
GR037 .....	3468
GR055 .....	3475
H5302 .....	3473
MB001 .....	3990
MTR140 .....	3963